



## SUS304 388L 4500W Cleaning Tools Soaking Tank For Sawing Knife

Our Product Introduction

for more products please visit us on [skymenultrasonic.com](http://skymenultrasonic.com)

### Basic Information

- Place of Origin: Shenzhen, China
- Brand Name: Sky men
- Certification: RoHS, CE, FCC, SGS
- Model Number: JP-388
- Minimum Order Quantity: 1
- Price: Negotiation
- Packaging Details: Wooden case
- Delivery Time: In Stock
- Payment Terms: T/T
- Supply Ability: 800 pcs per month



### Product Specification

- Model: JP-388L
- Tank Volume: 388L
- Heating Power: 3000W
- Internal Tank Size: 1080\*460\*680MM
- Basket Size: 1060\*440\*650MM
- Gross Weight: 250KG
- Highlight: 4500W Cleaning Tools Soaking Tank,  
388L Cleaning Tools Soaking Tank,  
SUS304 Sawing Knife Soak Tank



### More Images



## Product Description

### Bakery Shop Cleaning Tools Soaking Tank For Sawing Knife With 4500W Heating Power

#### Suggest cleaning time:

Item	Cleaning time
Pot& Pans	Initial soak 12 hours
Hot plates & grills	Minimum of 12 hours
Deep fry baskets	Minimum 3~4 hours
Hood filter	1 hour
Roasting pans	Initial soak 12 hours
Gas rings& Cooker tops	Minimum 12 hours
Bakery trays and racks	Initial soak 12 hours
Serving dishes	1-2 hours
Oven Racks	Initial soak 12 hours

#### Soaking tank with different capacity:

Model	Volume(L)	Internal tank size(MM)	Basket size(MM)	Unit size(MM)	Heating power	Material
JP-168	168L	655*410*625	605*390*595	755*510*785	1.5KW	SUS 304
JP-211	211L	750*450*625	700*430*595	850*550*785	1.5KW	SUS 304
JP-258	258L	890*480*605	840*460*575	990*580*800	3KW	
JP-274	274L	840*480*680	790*460*650	940*580*875	3KW	SUS 304
JP-388	388L	1080*460*680	1060*440*650	1480*560*875	4.5KW	SUS304
JP-483	483L	1365*520*680	1315*500*650	1465*620*875	6KW	SUS 304

#### LOWER ENERGY BILLS

The Skymen Clean Tank System can save a single kitchen location thousands of \$\$ per year in energy costs.

Kitchens can use up to 3 times more energy than other commercial facilities. Much of this energy comes from heating water to clean equipment as well as heating stoves to cook food.

Standard 3-compartment sinks and power sinks must be regularly refilled with hot water to maintain the appropriate sanitary conditions, and dish and pot washer machines dispose of the heated water with each washing cycle.

The equipment cleaned in traditional sinks does not remove the baked on coated carbon crust and that makes them harder to heat on a stovetop, creating an inefficient cooking process that wastes gas and or electricity.

The Skymen Clean Tank System Double walled insulated Tank is Thermostatically controlled so water is kept at a constant 75 degrees and equipment comes out perfectly clean and sanitised. By using The Skymen Clean Tank System you potentially eliminate the need to heat up to Thousands of Litres of running hot water per year and save Kw-hours used per year.

#### PRODUCT CONFIGURATION





## Directions for use

Step 1



Fill the with (preferably hot) water to the 'Fill Line' marked on the inside, plug the tank into an electrical outlet, and switch ON

## Step 2



Slowly add the oil/Carbon-Removal Powder

## Step 3



Load the tank with your dirty pots, pans, vent hood filters into the tank and Close the lid, leaving the items in the tank to soak, and walk away!

## Step 4





Remove the items from the tank, then simply rinse off any loose or softened carbon fragments.

**Cleaning Effect show:**

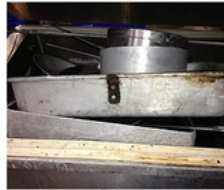
**Korean BBQ Grill Plate Cleaner**



**Bakery Rack Cleaner**



**Roasting Pan Cleaner**



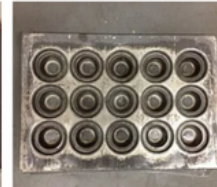
**Sheet Pan Cleaner**



**Cake Pan Cleaner**

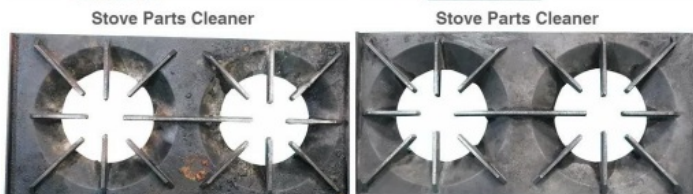
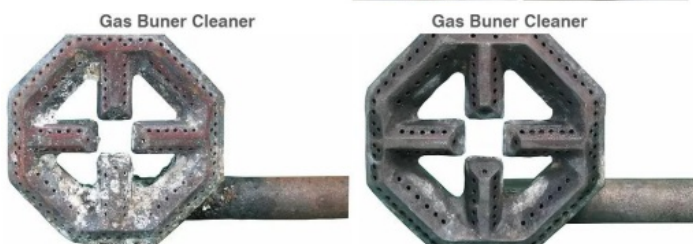
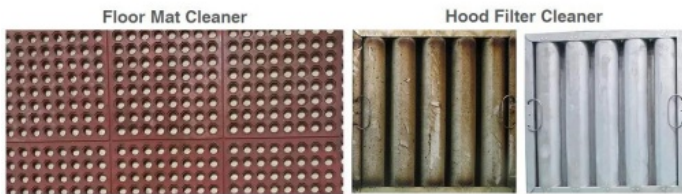


**Muffin Pan Cleaner**



**Rotisserie Basket Cleaner**





Factory and Warehouse







#### PRODUCT SPECIFICATIONS

1	Model	JP-388	
2	1st Tank	Function	Hot water cleaning/soaking
		Tank Material	SUS 304 (SUS 316 can be customized)
		Inner tank dimension	890*480*605mm
		Tank Capacity	388L
		Heating tube	3pcs
		Heating Power	4500W
		Time setting	0~99 hours
		Temperature setting	Room temperature ~ 80°C adjustable
		Thickness of tank	2mm
		Drain value	Yes, in the right side of machine
		Water inlet/outlet	Yes
		Lid	Yes, hinged with machine body, with gasket
		Handle of the basket	Yes
		Basket load	200KG
4	Packing	Overall size	1480*560*875mm
		Packing size	1580*660*1000cm
		Packing detail	By wooden case(No logs, free of fumigation)
5	Warranty	1 year warranty for spare parts, all life technical support	
6	Certificate	CE, RoHS; FCC, REACH	
7	Production time	5 days if there is stock; 20 days if there is no stock	



**Sky men Technology Corporation Limited**



86-755-27094405



info@skymen.cc



skymenultrasonic.com

Floor 1st & 2nd, Building 3, Tanggang Taifeng Industrial Park, Dawangshan Community, Shajing Street, Bao'an District, Shenzhen